

A high-angle photograph of three people working on a large wooden structure on a white table. The structure is made of thin wooden poles and white string, forming a complex geometric shape. One person on the left is wearing a green shirt and is focused on the structure. Another person on the right is wearing a grey sweater with yellow cuffs and is also working on it. A third person is partially visible at the bottom. The table is cluttered with various items: a 'layout pad' with a yellow cover, a black marker, a red cup, a box containing glue and other supplies, and some papers. The background shows a tiled floor and some other items on the table.

Ryder

Apprenticeships at Ryder

Ryder Architecture Limited

Newcastle
London
Glasgow
Liverpool
Manchester
Hong Kong
Vancouver
Amsterdam

info@ryderarchitecture.com
www.ryderarchitecture.com

Ryder Alliance

Melbourne
Sydney
Perth
Brisbane
Barcelona
Durban
Johannesburg
Cape Town
Bangkok
Shanghai
Seoul
Tokyo
Rome
Bern

www.ryderalliance.com



Contents

Page	
4	Introduction
9	Why Ryder
13	Apprenticeships
23	Ryder Bursary

Revision	Date	Author	Checked
1	16 September 2021	Laura Robson	Mark Thompson
2	15 February 2022	Laura Robson	Mark Thompson

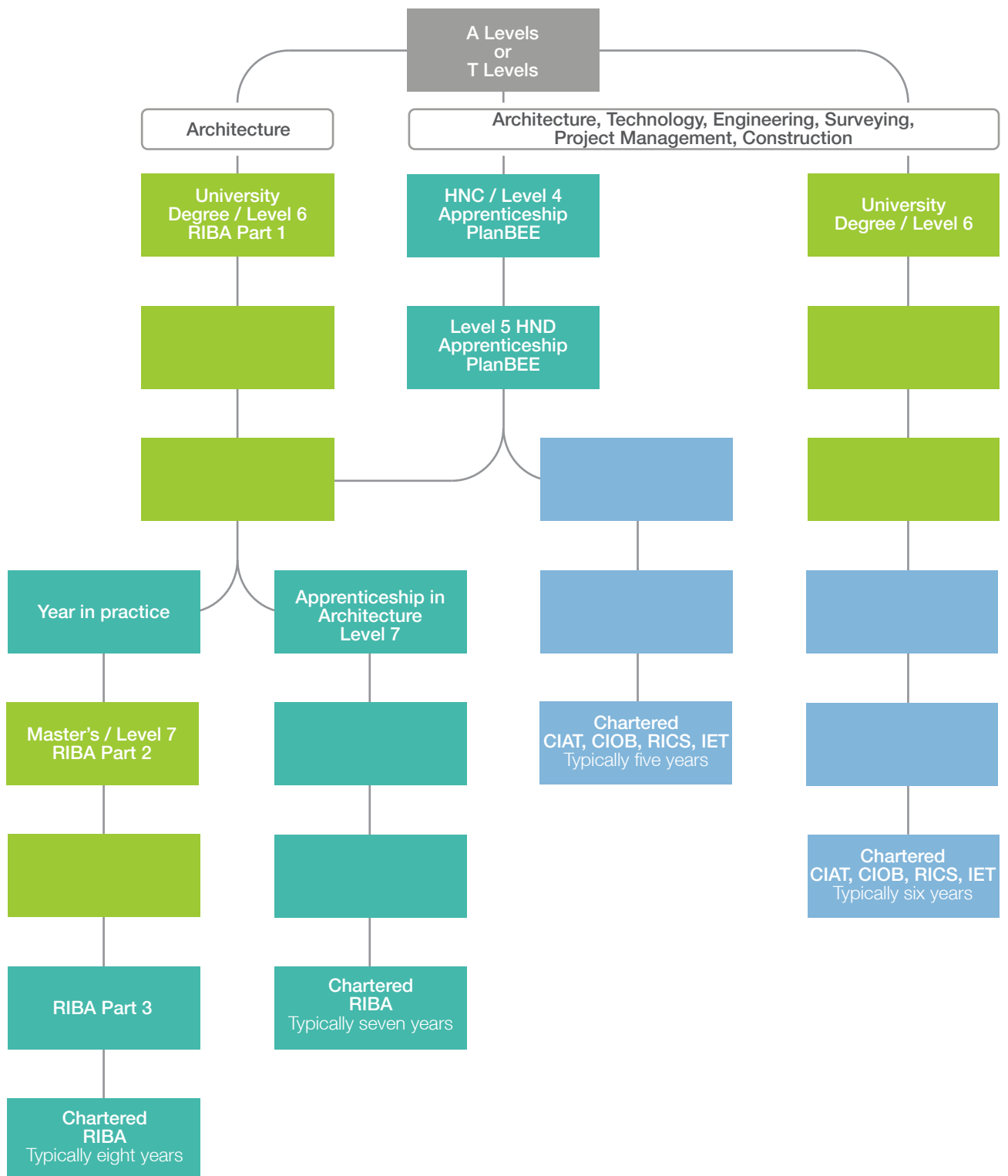
Introduction

Ryder has been at the forefront of supporting young people into the construction industry since 1995 when the Ryder Bursary was introduced.

In 2015, we launched the PlanBEE (Built Environment Education) programme – a two year apprenticeship in design, construction and management. It includes six work placements, providing students experience of working in all aspects of architectural and engineering design, and construction. On completion, students progress into architecture, engineering, surveying and construction, with the opportunity to become a member of the Chartered Institute of Architectural Technology, the Chartered Institute of Building, the Royal Institute of Chartered Surveyors or the Institution of Engineering and Technology.

In 2016, we embraced the architectural degree apprenticeship programme. This supports graduates on a four year training contract to achieve chartership with the Royal Institute of British Architects as an alternative to attending university full time study.

We hope this brochure provides all you need to know to apply. If you do have any queries, please contact:
Karen Leightley
kleightley@ryderarchitecture.com



Why Ryder

Ryder was established in Newcastle in 1953, and now has a team of over 300 passionate people across the UK, and in Hong Kong, Vancouver and Amsterdam. We deliver pioneering architectural services across a diverse portfolio of sectors, collaborating globally with our Ryder Alliance partners.

Our goal is simple – to improve the quality of the world around us and, in doing so, improve people’s lives. An approach embedded in the origins of Ryder which remains a touchstone today.

Our **values** were created by our people to reflect our culture.



Passionate about our people, clients and architecture.



Collaborative across the communities in which we work and the wider construction industry to deliver the best return for our clients and the environment.



Pioneering in our approach to reinventing architectural practice.



Empowering everyone to fulfil their potential and deliver unrivalled client experience.

We place great importance on your personal development from the very beginning of your career, continuing throughout your time with us.

Ryder is an equal opportunities employer. Our inclusivity strategy brings everyone to the conversation across the practice. It goes beyond compliance and continually aims to enhance existing protocols ensuring we support all our people by acknowledging our visible and non visible differences and strengthens our accessibility and diversity.

A collaborative environment

You will be embedded in a team where you will work with colleagues, internally and externally, in the pursuit of team and project goals, whilst sharing information and supporting others.

Security while you study

You will be assigned a training contract, reviewed annually, subject to continued performance at university and at Ryder.

Flexibility with your schedule

There is a mutual understanding at university and at Ryder that apprenticeships are a balance between live projects and academic study.

Support throughout your education

We will provide you with a dedicated mentor for the duration of your training.



Skills

Along with supporting the development of project skills through exposure to live projects, you will also have the opportunity to develop personal skills from communication to resilience.

Additional benefits

Teams enjoy annual trips to expand their knowledge and strengthen team bonds, as well as 26 days annual leave in addition to 10 study leave days.

Potential for salary progression

Based on your performance, there are opportunities for salary increases at annual development reviews.



Apprenticeships

PlanBEE

The PlanBEE campaign was instigated in 2013 to enhance education in the built environment.

The initiative is supported by a consortium of over 30 businesses across the UK representing a wide range of professional disciplines including architects, engineers and builders.

They recognised the need to adapt traditional education programmes to meet the changing demand for a more flexible, adaptable and technologically skilled professionals.



PlanBEE is a bespoke higher education programme based on the apprenticeship model with a blend of part time, work based and residential study over an accelerated period.

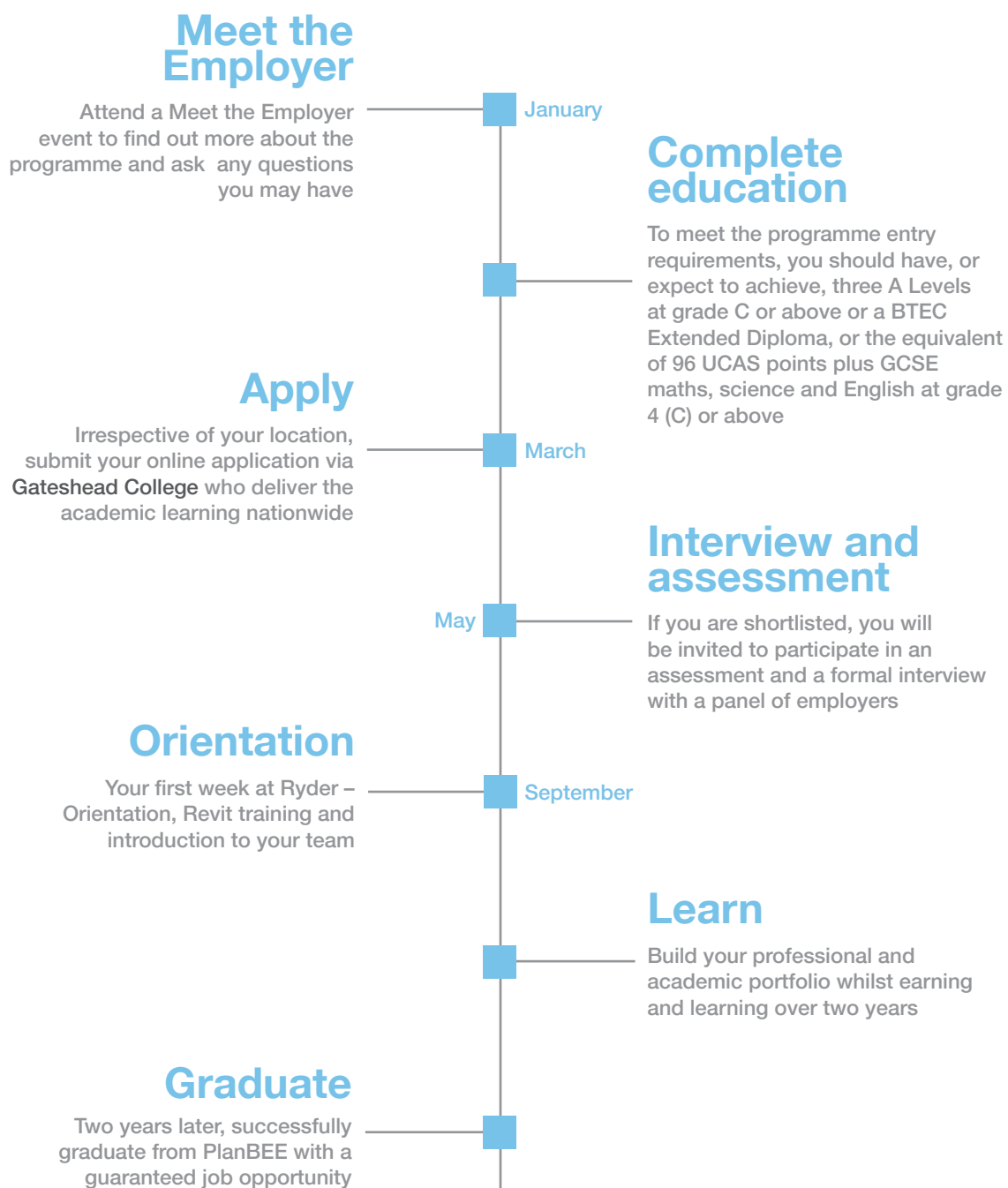
The programme combines study with working for some of the construction industry's leading companies, whose projects take them across the UK and around the world.

The programme is a Higher Apprenticeship and is accredited with HNC and HND qualifications. Progression into day release higher education programmes are available with Degree Apprenticeships on completion of PlanBEE.

Starting salaries are commensurate with the Living Wage as a minimum and can vary across the UK depending on location.



Five areas of study:
Leadership
Economics
Design
Technology
Production



Architecture Degree Apprenticeship

Ryder was part of the Trailblazer group which began leading the apprenticeship initiative for architecture in 2016.

We are passionate about offering alternative routes to qualification and attracting a diverse range of people into the built environment.

The Ryder **Apprenticeship in Architecture** emphasises practice experience, combining work based training with academic learning, allowing you to earn and learn on an integrated route to professional qualification.



Following a successful summer placement, the majority of the academic courses commence in September.

We offer apprenticeships at Level 7 – equivalent to a Master of Architecture / RIBA Part 2 and 3.

Who should apply

The apprenticeship is aimed at those who have gained exemption from RIBA Part 1 – whether through an architecture degree or another route, such as a Level 6 apprenticeship.

We recommend that applicants have already spoken to their chosen university about the opportunity. Alternatively, Ryder has strong links with many universities and can support applications.



Financial support and tuition fees paid

Mentor to support with job and university related work

Access to a vast **pool of knowledge and expertise**

Investment in professional development

Empowerment through new opportunities and responsibilities



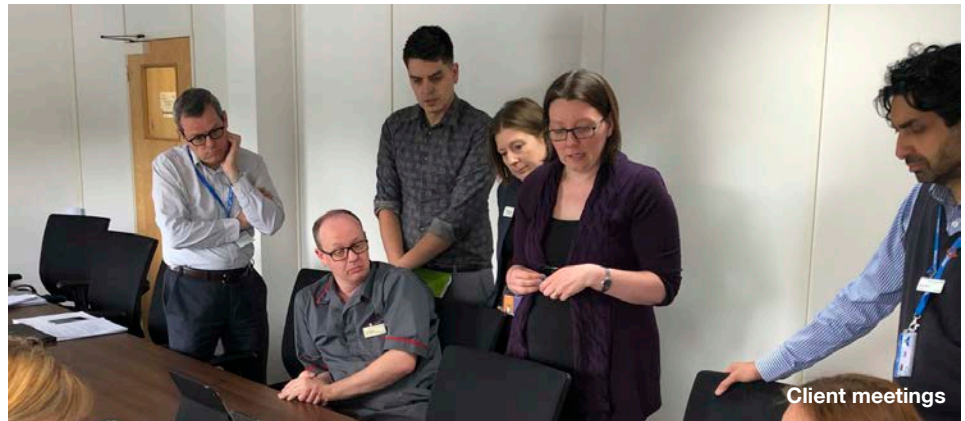
Experience

As an apprentice, you will enjoy a well rounded experience, tailored towards creating a route that supports you to achieve chartered status in your chosen discipline.

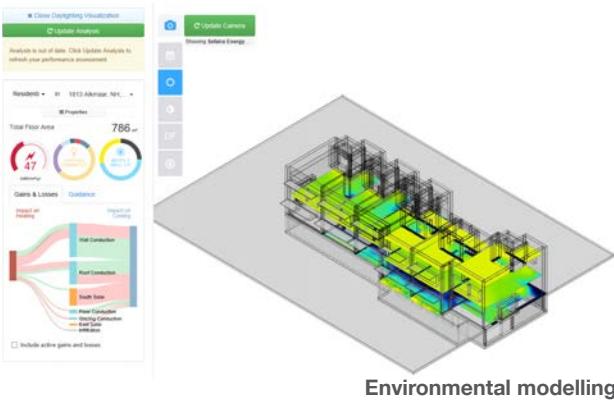




RIBA workstages



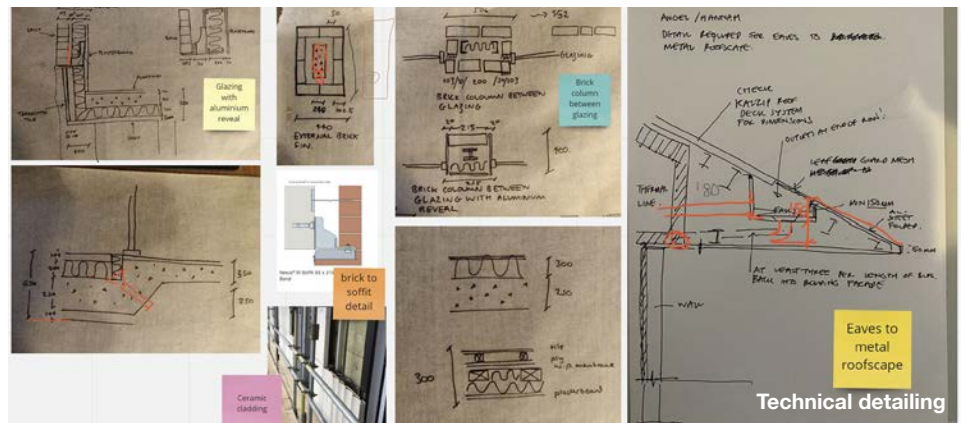
Client meetings



Environmental modelling



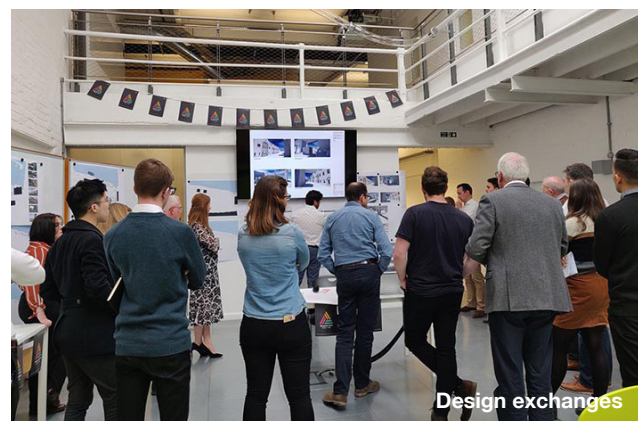
Presentations



Technical detailing



Secondments



Design exchanges

How to Apply

All of our apprentices are employed through Ryder and attend university when required.

Head to **JoinUs** on the Ryder website to submit your application:

- Apply for a role
- Keep your details up to date
- Track the progress of an application
- Contact our recruitment team

Should your written application be successful, you will be invited to interview. This will be online and possibly part of a group interview.

To meet the eligibility criteria for our apprenticeship positions, applicants must:

- Have the right to work and study in England for the duration of the apprenticeship.
- Be a citizen of a country in the European Economic Area (EEA) or have the right to abode in the UK and have been resident in the EEA for at least the previous three years on the first day of the apprenticeship.

For further information on the Architectural Apprenticeship, head to **The Institute for Apprenticeships**.

For a list of universities offering the Level 7 apprenticeship scheme, head to **RIBA Apprenticeship Training**.

“

“After completing my part one, contemplating going back to university for another five years was quite overwhelming. Leaving Ryder to study was not the right option for me but I needed a solution to continue the progression of my career. The Architecture Degree Apprenticeship was a huge opportunity.

I am grateful Ryder was one of the first companies to invest in the pioneering scheme, which promotes greater collaboration between academia and practice, as well as flexibility.”

Ryan Bemrose





Ryder Bursary

The Ryder Bursary was introduced in 1995.

The financial award is for those seeking to gain further qualifications through full time study following a successful placement with Ryder. The final part of the Bursary being a two year development contract for graduates to achieve their professional qualifications.



The scope and commitment provided by the Bursary has few equals in supporting architectural education. Many of our present senior team have benefitted from this nurturing in their early years, with others succeeding equally well in many leading practices or running their own practices.

Applicants are required to present for up to 30 minutes on:

- Ryder and academic portfolio
- What you have gained during your time at Ryder
- An overview of your research paper
- Your intentions for further study and subsequent career

The level of financial support will depend on the duration of study. Typically, for a two year master's, this amounts to c£8,000 / annum in addition to generous support and guidance to achieve professional qualifications, subject to an annual review and ongoing exceptional performance.



“The process to win the Bursary was tough but supportive. For me, winning meant a chance to explore design at an outstanding university where students are encouraged to transform architectural problems into meaningful solutions.

Knowing that I could return to a practice that improves people’s lives and strives to improve the quality of the world around us by producing simple, useful and elegant architecture is an opportunity that I still can’t believe I have received.”

Hannah Bryan, Architect



“

“The Bursary is, above all, a marvellous opportunity. For me, it represents a medal of trust, which is of mutual benefit between the winner and Ryder.

The opportunity of guaranteed practice after my graduation, combined with a certain degree of financial comfort, has enabled me to focus solely on my academic performance whilst studying to complete my masters with the support of Ryder.”

Mihail Pandrea, Design Assistant



“

“Winning the Bursary is an unparalleled opportunity to reciprocate the trust and encouragement Ryder has given me throughout my time as a part one graduate. The application process itself is a great opportunity to celebrate the breadth of experience gained at Ryder.

I am delighted at the prospect of returning to pursue professional accreditation at a firm whose values align so closely with my own beliefs and goals.”

Laura Bielinski, Design Assistant



“

